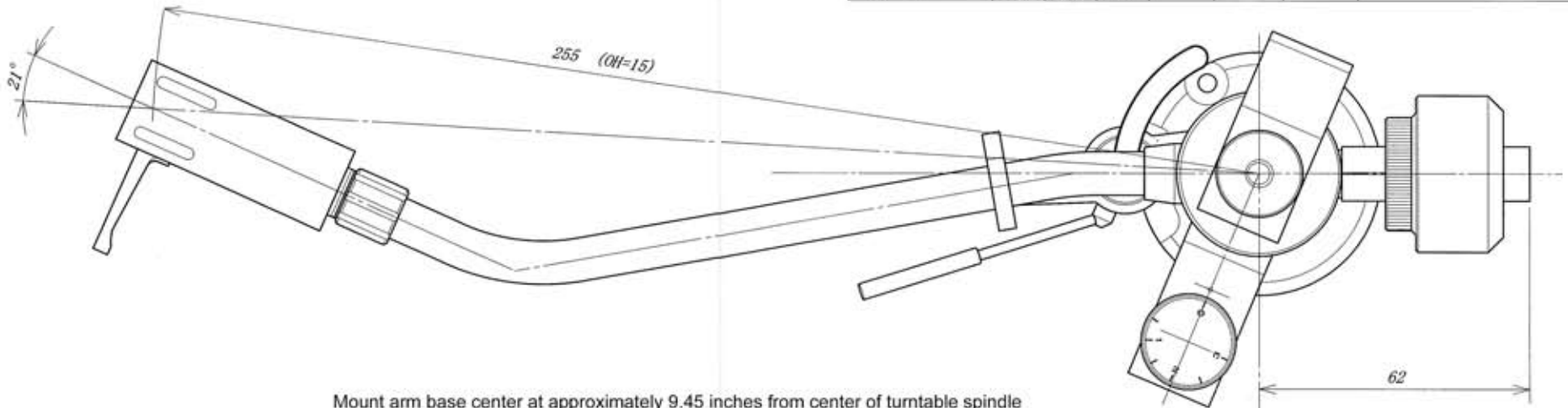
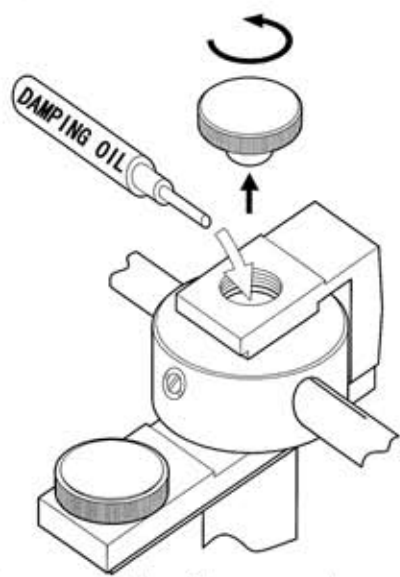
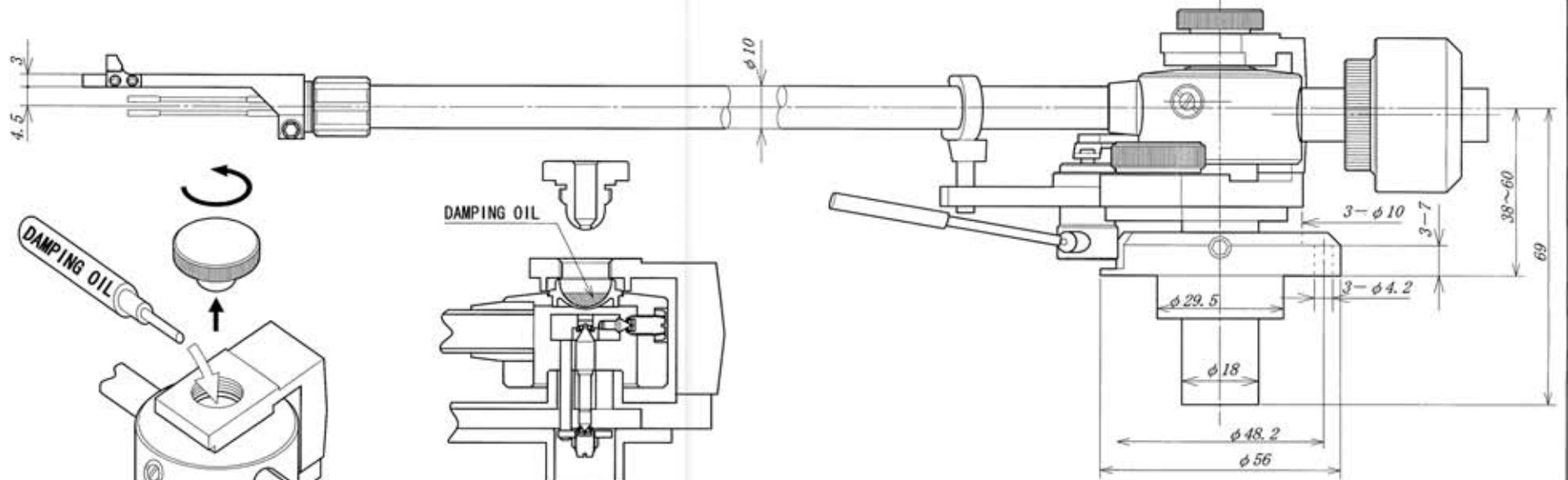


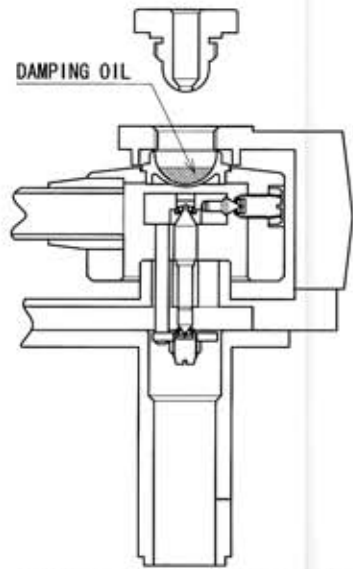
TOLERANCE	I	II	III	ANGLE	SYMBOL	DATE	REVISION
0.5 ~ 6	±0.05	±0.1	±0.2	±0.5°	△ X		
6 ~ 30	±0.1	±0.2	±0.5	±1°	△ X		
30 ~ 120	±0.15	±0.3	±0.8	±1.5°	△ X		
120 ~	±0.2	±0.5	±1.2				



Mount arm base center at approximately 9.45 inches from center of turntable spindle



Unscrew cap at top of tonearm, and pour silicon damping oil into reservoir



Fill reservoir cup to approximately half full level as illustrated above

No.	QNT	DRAWING No.	PARTS NAME	MATERIAL	FINISH	NOTES
MATERIAL				PARTS NAME		
Magnesium and Aluminum				S240 TONEARM		
FINISH				DRAWING No.		
				P240A		
DESIGNED		APPROVED				
DRAWN		CHECKED				
AUGUST 8, 2011						
3RD ANGLE PROJECTION						
UNIT: mm		SCALE 1 : 1		REK-O-KUT		