

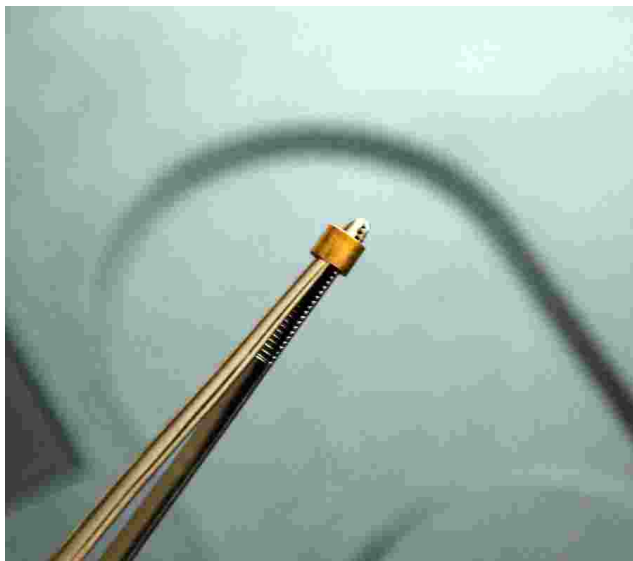
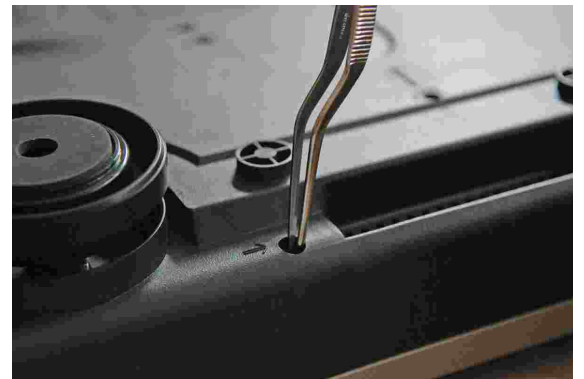
OPENING THE CVS TURNTABLE - REMOVAL OF BOTTOM COVER

You should not have to open the turntable except for unusual events, like a broken wire, defective V/L switch, blown fuse, or an electrical problem. Hopefully, these will never occur. The first thing to do is to secure the arm. Then turn the turntable over and place it on a soft surface, like a sheet of foam rubber, or other padding.



1) Next, remove all 8 Philip-head screws from the bottom. They are easily identifiable because the bottom cover has molded-in arrows that indicate the appropriate screws. The screws have little brass collars fitted to them, and these collars may remain in the deep cover holes.

2) Before removing the bottom cover, you must remove these collars. To do so, use a pair of tweezers or long-nosed pliers. Close the pliers or tweezers, insert them in, then expand them. They will grip the collar for easy retraction.



3) When all screws and collars are removed, lift off the bottom cover while routing the arm cable through the hole in the cover. Put the cover in a safe place.

4) Proceed to the desired repair